

ZGEMMA H17 COMBO

4K-UHD

Easy Setup Guide



More details please go to <http://www.zgemma.org>

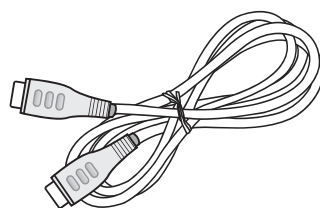
Packaging Contents

Please check all package contents before using your product.

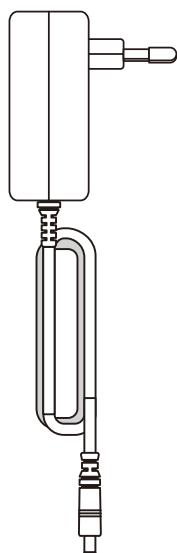
ZGEMMA H17 COMBO



User's Guide



HDMI Cable



AC Adapter



WiFi antenna

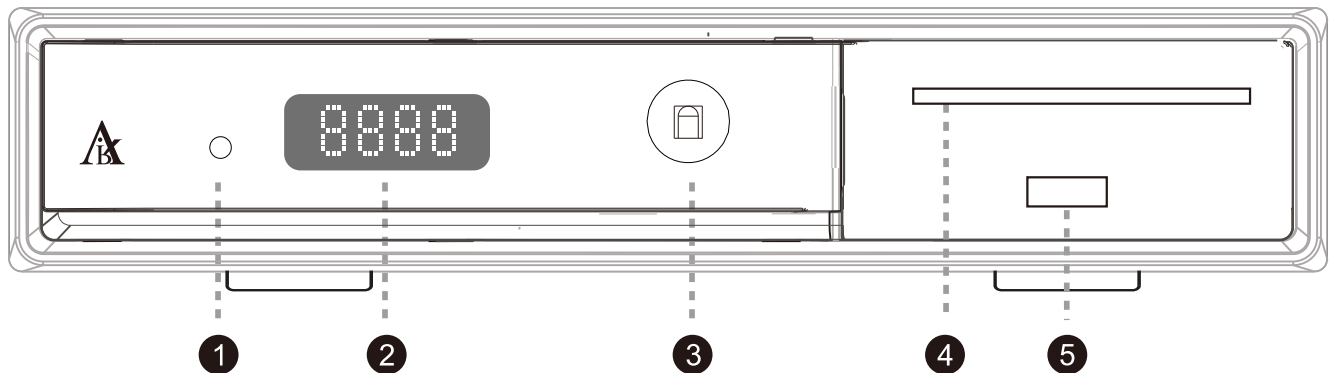


Remote Control

* The accessories may vary according to area.

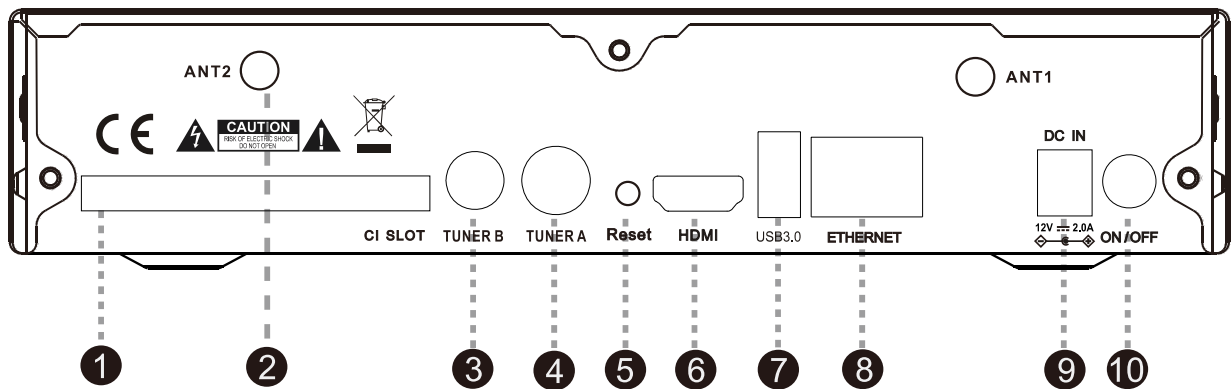
Product Descriptions

Front Panel



- 1.Indicator:Display the current status of STB. Green is on, Red is deep standby.
- 2.7-Segment Display.
- 3.IR Receiver: Receive the IR signal from remote controller.
- 4.Smartcard reader slot: One Smart card slot is provided.
- 5.USB.

Rear Panel



- 1.CI slot
- 2.ANT: Built-in wifi antenna
- 3.LNB IN: Connect to Satellite cable
- 4.RF IN: Connect to Terrestrial cable or Cable TV
- 5.Reset: USB update key
- 6.HDMI: Connect to TV using a HDMI cable for both audio and video signals
- 7.USB: USB3.0
- 8.ETHERNET: One Ethernet cable
- 9.DC Power Jack:Connect the provided AC/DC adapter(2A/12V)
- 10.Power Switch:Press to turn on/off the power

Remote Control

POWER
Press to turn the product on or standby

Numeric Keys
Press to enter a channel number or numbers according to the menu options

PREVIOUS
Press to go to Previous Page

BACK
Press to return to the previous service or Menu

Navigation Keys
Press to navigate up/down and left/right on the menu options. up/down keys are used to call up the channel list

EXIT
Press to exit the current menu option into the live mode, or switches one step back of the menu.

Volume +/-
Press to adjust the audio volume

TEXT
Press to display the teletext information of the current channel, if the channel provides teletext data.

TV
Press to display the TV channel list

Color Keys
RED, Green, Yellow & Blue Each key is assigned a specific function that may be different in each manu

POWER
Press to turn the product on or standby

MUTE
Press to mute the audio or un-mute

NEXT
Press to go to Next Page

INFO
Press to view the Program information

OK
Press to confirm the selected menu option

EPG
Press to display the EPG(Electronic Program Guide) information if the channel provide

Channel(Page) up/down
Press to navigate through the scanned channel list or move the channel/program list in pages

MENU
Press to main menu

FILE LIST
Press to display the list of recordings stored on the external HDD if any

AUDIO
Press to select available audio language and audio type

SUBTITLE
Press to display the subtitle of the current channel, if the channel provides subtitle data

PORTAL
Press to go to Portal menu

RADIO
Press to display the Radio channel

Recording [•]
Press to start or stop recording media

STOP [■]
Press to stop playing media

Play/Pause [⏮]
Press to play the selected file(e.q.recording)at the normal speed or pause the live program or recording play

Previous Program [⏮]
Press to move to previous program

Next Program [⏭]
Press to move to Next program

TIMER
Press to view the Timer Schedule

Fast Rewind [⏮]
Faster rewind than the normal speed

Fast Forward [⏭]
Faster forward than the normal speed

SLEEP
Press to turn off the product sleep timer by user

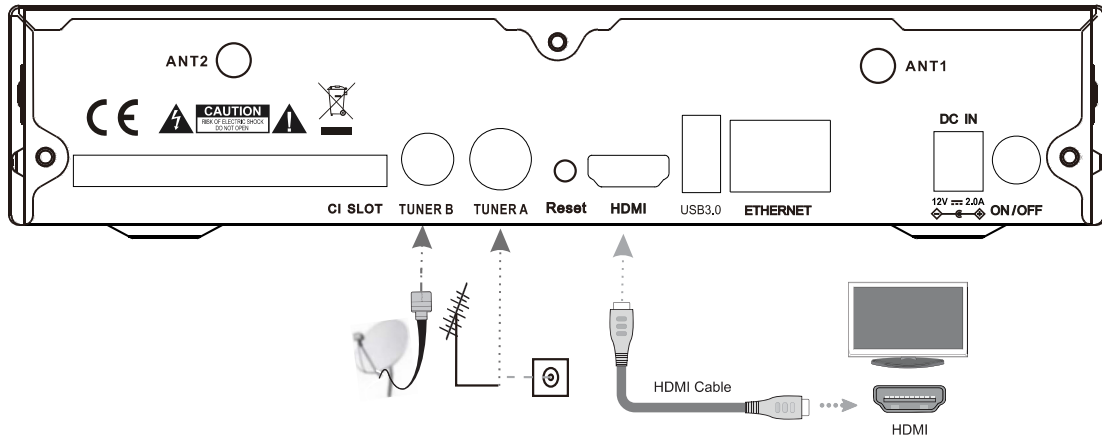
V.MODE
Press to change the display output ratio: Wide Zoom or Original

FAV
Show the Favorite Lists available

HELP
Press to display major important operation methods. This provides users with a quick guide of product

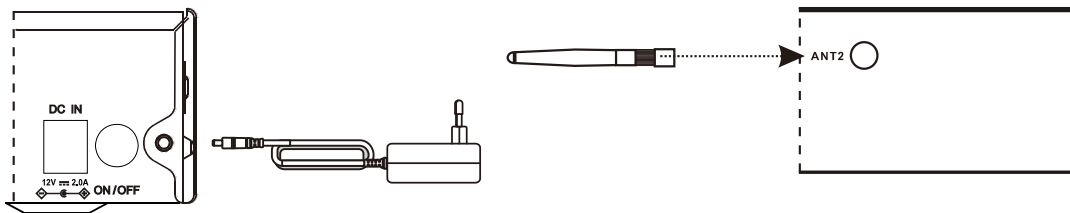
Connecting TV via HDMI cable

Connect your TV to ZGEMMA H17 COMBO using a HDMI cable as follows.



Power up

A power cord and an adapter are provided in the accessory box.
WiFi antenna connected to antenna interface



First Time Installation

Step 1. Video Input Selection

Video input selection

Please press OK if you can see this page on your TV or select a different input port.

The next input port will be automatically probed in 6 seconds.

English

HDMI



Step 2. Video Mode Selection

Video Mode Selection

English

720p

1080i

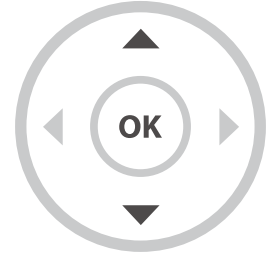
1080p

2160p

576p

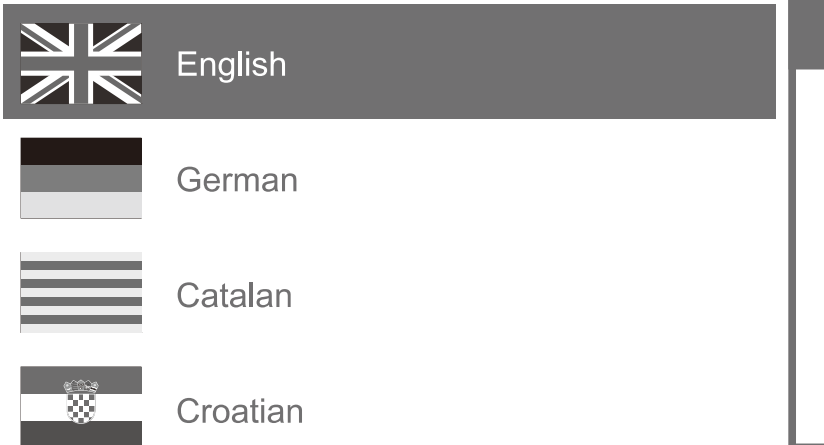
480p

576i



Step 3. Language Selection

Please use the UP and DOWN keys to select your language.
Afterwards press the OK button.



Step 4. Conguring Satellite Connection

Welcome.

This start wizard will guide you through the basic setup of your STB.
Press the OK button on your remote control to move to the next step.

English

Use the up/down keys on your remote control to select an option. After that, press OK.

English

Use wizard to set up basic features

Exit wizard



Software update

- 1.Download new software file from <http://www.zgemma.org>
- 2.Decompression file to your usb stick root directory
- 3.Place usb sitck to your box rear panel slot
- 4.Press the reset key power on your box
- 5.After power on your box 8-10 second, release reset key now. Then the logo led will display flash and the box will auto restart. It will cost 3-5 minutes.